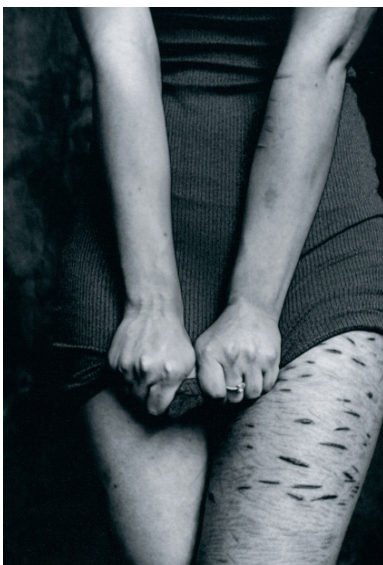


©Colton Van Til, Woodinville H.S.  
2nd place ABSTRACT



©Madison Davis, Glacier Peak H.S.  
2nd place CAMERA PHONE



©Nikolas Marsolini, Kentridge H.S.  
1st place DOCUMENTARY

**DEADLINE FOR ENTRY**  
**APRIL 28, 2018**

### What is the Washington State High School Photography Competition?

An annual event designed to showcase the finest photographers in Washington state high schools. **Watch our new three minute video on Facebook:**

[www.facebook.com/Washington-State-High-School-Photography-Competition-1097209700373589/home](http://www.facebook.com/Washington-State-High-School-Photography-Competition-1097209700373589/home)

### Who can enter?

Any student grades 9-12 currently enrolled in a Washington state public, private or alternative high school.

### Why enter?

Here's an opportunity to have your photograph exhibited at the Seattle Art Museum, see your photo featured on a Jones Soda bottle, shoot like a pro at a Sounders FC soccer match, and bank a little prize money—cha-ching!

### Deadline

All entries must be in our possession by 3PM Saturday April 28th, 2018.

If you're shipping entries via post office, please use this address:  
Kenmore Camera PO Box 82467 Kenmore, WA 98028.

For UPS, Fed X, etc. and hand delivery, please use:

Kenmore Camera 6708 NE 181st Street Kenmore, WA 98028. All entries from a single school must be delivered together with a fully completed entry form, student list, and one single payment - absolutely no exceptions. Please mark boxes attn: Washington State Photo. For directions visit [www.kenmorecamera.com](http://www.kenmorecamera.com)

### Entry Fee

\$3 per entry. A limit of 6 entries per student. Purchase orders, checks and bank cards accepted. Cash is not accepted.

Please make purchase order or check payable to Kelly Atkinson.

### Prizes (see page 12 for full details)

- Best in Show: \$250
- Students winning 1st place in the other 10 categories will receive a check for \$100.
- One student will be selected to receive full tuition summer teen workshop of your choice at the Photographic Center Northwest (\$395 value) courtesy of PCNW.
- Six images from the exhibit will be selected by Jones Soda and featured on a run of 250,000 of their soda bottles.
- 1 lucky student will be selected by the Seattle Sounders FC soccer club to attend a professional soccer match, get down on the field and learn how to photograph a game with Sounders FC photographer Corky Trewin.

### Questions?

Contact Executive Director Kelly Atkinson at [kellyatkinsonphotography@gmail.com](mailto:kellyatkinsonphotography@gmail.com)

### Visit us on Facebook!

[www.facebook.com/Washington-State-High-School-Photography-Competition-1097209700373589/home](http://www.facebook.com/Washington-State-High-School-Photography-Competition-1097209700373589/home)

museum quality  
**FRAMING**

**Canon**

**KENMORE CAMERA**

PHOTOGRAPHIC  
CENTER  
NORTHWEST

## A BRIEF HISTORY OF THE WASHINGTON STATE HIGH SCHOOL PHOTOGRAPHY COMPETITION AND EXHIBIT

The Washington State High School Photography Competition has a grass roots beginning in the mid 1980's. Formed by a group of high school photography instructors as a way of elevating student photography, the early competitions included only a handful of high schools, a few hundred entries, passionate instructors and eager students. The images were collected and organized by the instructors and later judged by an impartial jury. Ribbons were awarded and the final images traveled throughout the year to be exhibited at the competing schools. It was small, informal and entirely volunteer.

In the 1990's the event attracted sponsorship and public awareness rose due to exhibits at the Seattle Art Museum, featured articles in the Seattle Times newspaper, a segment on KING TV's Evening Magazine and New Day programs, and a prestigious awards ceremony featuring Washington State Governors Mike Lowry and Gary Locke. In 2017, we received nearly four thousand entries. Today, the final exhibit is featured at Museum Quality Framing in June, the Seattle Art Museum in December and Kenmore Camera in January and February.

The competition welcomed support from sponsors Museum Quality Framing, who graciously offer to professionally mat and frame the final exhibit images and host the awards ceremony; Canon USA, who provide operating funds; the Jones Soda Company, who reproduce 6 student images on 250,000 of their soda bottles; and the Photographic Center Northwest, who provide free tuition to one of their summer teen workshops to a deserving student. Kenmore Camera, a local digital and photographic dealer, showcases the final exhibit images on their website at [www.kenmorecamera.com](http://www.kenmorecamera.com), and handles some administrative tasks.

This event remains largely a volunteer effort with many volunteers devoting time throughout the year to ensure its success. The advisory board includes five active high school photography instructors: Sully Hester, Woodinville; Janet Neuhauser, Bainbridge; Rob Flye, Inglemoor; Chantelle Moran, Meadowdale; and Jeremy Leffel, Stadium High School. With their continued guidance and the support of our sponsors we will provide a prestigious public platform for student photographic art.

### Visit us on Facebook!

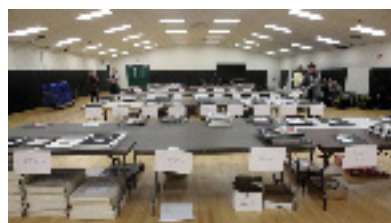
Our Facebook page is the best way to stay in tune with what's happening. The WSHSPC Facebook page is administered by Andri Kumar, a Bothell High School graduate and a 2014 winner in our contest. Andri is doing a fantastic job ushering us into social media. In 2017, we created a three minute video shot and edited by Marko Vuckovic, who was a student at Meadowdale High School. Watch the video on our Facebook page: <https://www.facebook.com/Washington-State-High-School-Photography-Competition-1097209700373589/home>



Governor Gary Locke presenting a student with a *Certificate of Excellence* in 1997 at the Seattle Art Museum.



Governor Mike Lowry with sponsors at the Seattle Art Museum awards ceremony in 1996.



In 2016, our volunteers processed and sorted 3,741 entries from 62 high schools in a single day. That's a lot of work, buster! Photo courtesy of Cal Ellis.

**DEADLINE FOR ENTRY  
APRIL 28, 2018**

museum quality  
**FRAMING**

**Canon**

**KENMORE CAMERA**

PHOTOGRAPHIC  
CENTER  
NORTHWEST

### IMPORTANT CHANGES IN 2018:

- The COLOR category has been eliminated. Color entries may be placed in all other categories, with the exception of #1 TRADITIONAL SILVER GELATIN B&W.
- Scanography (images created using a scanner) will be accepted, but must be placed in category #8 MANIPULATION.
- Standard alternative processes (pinhole, cyanotype, solarization, etc) may be placed in categories other than MANIPULATION.
- The MANIPULATION category is reserved exclusively for entries using extensive Photoshop techniques, and, Scanography (images created using a scanner).
- Photographs placing 1st - 6th in previous WSHSPC may not be re-entered.

### I NEED YOUR HELP!

We have only one person handling all of the administrative duties of this statewide event, so, I need your help to stay organized. Here's what you can do to help:

### PLEASE USE A TAB

Please separate each category with a tab (see photo). I know it sounds simple but this little tab will save me a lot of sorting time and it's easy for you to do.



### NO POPCORN, SHREDDED PAPER OR PROTECTIVE SHEETS, PLEASE!

Popcorn and shredded paper are brutal. I have to clean each of your entries due to static electricity. Please do not individually wrap entries, or, place protective sheets of paper in between each entry. I have to handle each entry in order to remove them.

### ACCURATELY COMPLETE THE ENTRY FORM AND PAYMENT INFORMATION

If we do not receive a fully completed entry form, typed student list, correct payment information and correct amount of payment, **it will result in disqualification.**

Please insert payment, entry form and student list in an envelope so I don't have to fish around in your containers to collect important documents. Thanks!

### PAYING FOR ENTRIES WITH A BANK CARD

You **MUST** include the following vital information or it will result in disqualification.

If you are paying with a bank card (school or personal) you **MUST** provide:

- 1) the bank card number, 2) the expiration date, 3) the correct **BILLING** address for that specific card (if you are using a school or district bank card this is rarely the same as the school address so please confirm with your purchasing agent.) 4) the CUV number (the 3-digit security number on the back of the card). **The BILLING address you provide us must match the BILLING address the bank has on file for that bank card, otherwise the transaction will not be allowed by the bank and your entries disqualified.**

### PAYING FOR ENTRIES WITH A PURCHASE ORDER

We gladly accept purchase orders, but **you must attach a hard copy of your purchase order to your official entry form.** Please make po's payable to Kelly Atkinson.

### PAYING BY CHECK

**Only one check per school will be accepted. Make checks payable to Kelly Atkinson.**



©Abby Sandefur, Tacoma School of the Arts  
1st place PORTRAIT



©Shivani Southwick, Meadowdale H.S.  
3rd place PEOPLE



©Zach Welker, Skyview H.S.(Vancouver)  
2nd place PEOPLE

**DEADLINE FOR ENTRY  
APRIL 28, 2018**



*“It’s not  
what you  
look at that  
matters,  
It’s what  
you see.”*

Henry David Thoreau



©Kaylie Shaver, Hanford High School



©Jonathan Walzer, Meadowdale H.S.

### HOW TO IMPROVE YOUR CHANCES:

Here are a few things students and instructors can do to improve your chance of success in the competition:

Think beyond the literal meaning of the category title. For example, in the category of ANIMAL, we receive numerous photographs of cats. Many are simply sitting on a sofa staring at the camera. Yes, that literally fits the category description of ANIMAL, but those photographs don’t reveal very much to viewers or tell an interesting story.

This is an art competition. It is essential to engage the viewer. Look at the photos below of the cat, and the dead coyote. Both are past winners in the ANIMAL category and do a wonderful job of creating a story, engaging the viewer and making us think.

You can also use a unique camera angle, blurred action, or an abstract point of view to make an ordinary photograph more interesting. Finally, capture the same subject in a number of different ways rather than taking just one photograph. When you are photographing, take your time, use your imagination, shoot more and edit later.

### THE NUMBERS GAME

A school earns points when a student wins 1st - 6th place in a category (see page #10 for details about scoring). So, if your school is entering less than six entries per category you are decreasing your chance to earn points for your school. With eleven categories this year, your school should be entering a minimum of 66 total entries (six per category) if you hope to earn the maximum number of points available.

### THE NUMBERS GAME (PART TWO)

Consider placing a photo in a category that typically receives less entries. Some of our categories are popular and receive several hundred entries, such as PORTRAIT and LANDSCAPE. But, we receive relatively few entries in the TRADITIONAL SILVER GELATIN B&W, DOCUMENTARY, and MANIPULATION categories. Judges select six photographs from each category, so you can increase your odds by entering in the less popular categories. Below are the number of entries per category from 2017. These numbers are fairly consistent from year-to-year.

The number of entries per category in 2017:

1. TRADITIONAL SILVER GELATIN B&W = 153
2. ABSTRACT = 238
3. ANIMAL = 338
4. DOCUMENTARY = 204
5. STILL LIFE = 369
6. PORTRAIT = 474
7. ARCHITECTURE = 291
8. MANIPULATION = 221
9. CAMERA PHONE = 301
10. LANDSCAPE = 536
11. PEOPLE = 388

### Where should I place my image?

- **camera phone/ipad images** - MUST be placed in #9 CAMERA PHONE
- **images with extensive use of Photoshop** - MUST be placed in #8 MANIPULATION
- **traditional silver gelatin b&w** - categories 1-11 (except category #9)
- **color photographs** - categories 2-11

### 1. TRADITIONAL SILVER GELATIN B&W

This category celebrates the tradition of the b&w medium. Exclusive to images shot on b&w film and printed on b&w silver gelatin paper. Special emphasis will be placed on the quality and craftsmanship of the b&w print. No digital or color entries allowed. Traditional silver gelatin b&w images may also be entered in all other categories except #9 CAMERA PHONE.

### OPEN CATEGORIES

With the exception of category #9, entries in the following categories may use b&w, color, traditional silver gelatin b&w, standard alternative processes, and digital materials.

### 2. ABSTRACT

A photograph which is non-pictorial and/or non-representational and emphasizes design elements and principles.

### 3. ANIMAL

A photograph of an animal or group of animals.

### 4. DOCUMENTARY/STREET PHOTOGRAPHY

Images which are documentary or photo journalistic in nature. The entry may be a single image or a combination of images. Multiple images are accepted provided they are mounted on a single piece of mat board not exceeding 16"x20".

### 5. STILL LIFE

A photograph of an object or objects found or arranged by the photographer.

### 6. PORTRAIT

A photograph of a person or group of people in which the photographer controls the pose, setting and/or lighting.

### 7. ARCHITECTURE

A photograph of a man-made structure which can include architectural details.

### 8. MANIPULATION

A photograph manipulated beyond what is considered basic darkroom techniques (dodging, burning, contrast/brightness adjustment). Digital images with heavy use of Photoshop. Images created using a scanner (Scanography) or 3D printer must be placed in this category.

### 9. CAMERA PHONE

Photos created with ANY mobile device (smart phone, ipad, etc.) other than a camera.

### 10. LANDSCAPE/CITYSCAPE

A photograph of a natural or urban scene.

### 11. PEOPLE

A photograph of a person or group of people.



©Ross Osborne, Ferris High School  
3rd place MANIPULATION



©Tony Jacobson, Northwest School

**DEADLINE FOR ENTRY**  
**APRIL 28, 2018**

### Questions?

Please contact Executive Director  
Kelly Atkinson at:  
kellyatkinsonphotography@gmail.com

museum quality  
**FRAMING**

**Canon**

**KENMORE CAMERA**

PHOTOGRAPHIC  
CENTER  
NORTHWEST

## 2018 RULES & REGULATIONS

Please read carefully



©Nicole Knittel, Inglesmoor HS  
2017 Best in Show



©Allie Wiegand, Bellevue High School  
2008 Best in Show



©Sarah Truscott, Seattle Academy  
2014 Best in Show

**DEADLINE FOR ENTRY**  
**APRIL 28, 2018**

1. The student entering the image must perform all capturing, processing, printing and presentation of the image. Only students currently enrolled in grades 9-12 in a public, private or alternative high school in Washington State may participate.
2. **ABSOLUTELY NO COMMERCIALY PRINTED IMAGES ACCEPTED.** High school photography instructors must verify that students performed the printing of each entry.
3. Each participating student is limited to 6 entries.
4. All entries must be 16"x20" or smaller and **securely** mounted on mat board or foam core not exceeding 16" x 20." **Do not use cardboard or construction paper.** There is no minimum size.
5. All entries must be labeled with the official ID tag. ID tags must be legible and **COMPLETELY** filled out. Securely affix the ID tag to the **upper left-hand corner** on the back of each entry.
6. Each participating school must submit a **FULLY COMPLETED** official entry form, correct entry fees, and a single typewritten, alphabetized list of every competing student from that school.
7. All photographs must be sorted by category before delivery. Please clearly indicate each category with a tab or post-it.
8. All entries from a single school must be delivered together. **NO EXCEPTIONS.**
9. No school name may appear on the front of the entry, but the student name and/or image title may appear on the front.
10. When hand delivering entries they must be in a **sturdy** container clearly marked with the school name. Loose entries will not be accepted.
11. Any entry in any category may be toned, hand-colored or tinted.
12. Entries should not be modified in ways other than "traditional darkroom" techniques (burning/dodging, cropping, or adjustments of contrast and/or brightness). Images manipulated beyond that **MUST** be entered in the **MANIPULATION** category, including entries with heavy use of Photoshop and scanography (images created using a scanner.)
13. All images taken with a camera phone, smart phone, ipad or mobile device, other than a digital camera, **MUST** be placed in the **CAMERA PHONE** category.
14. All entries in the **TRADITIONAL SILVER GELATIN B&W** category must be produced entirely with the use of traditional b&w photographic materials. An entry digitized at any stage of its production must be classified as a digital image.
15. If a student ignores **technical regulations** and places an entry in the inappropriate category it will be disqualified. (Examples: digital image entered in the **TRADITIONAL SILVER GELATIN b&w** category; an image captured with a camera phone or ipad entered in a category other than **CAMERA PHONE**; an image using extensive Photoshop techniques entered in a category other than **MANIPULATION**).
16. Photographs placing 1st - 6th in a previous WSHSPC may not be re-entered.

**FAILURE TO COMPLY WITH ANY OF THESE RULES MAY RESULT IN DISQUALIFICATION.**

Liability: Every reasonable precaution will be taken to avoid any damage to entries. Museum Quality Framing, Kenmore Camera, Canon, Key Bank, Kelly Atkinson, Inglesmoor High School and its staff and students, and all other approved volunteers and co-sponsors assume no responsibility in the event an image is lost, damaged or stolen.

### QUESTIONS?

Contact Executive Director Kelly Atkinson at [kellyatkinsonphotography@gmail.com](mailto:kellyatkinsonphotography@gmail.com)

Washington State  
High School  
**PHOTOGRAPHY**  
Competition 2018

2018 OFFICIAL ENTRY FORM

**DEADLINE FOR ENTRY**  
**APRIL 28, 2018/3PM**

This official entry form must be FULLY completed by the photography instructor of the competing school. By entering you agree to verify that all entries from your school were printed by students. Commercial prints will be disqualified.



**Don't  
Forget...**

1. Sort images by category.
2. Include a typed student list.
3. One payment per school.
4. Hand delivered entries must be in a container with your school name on it - **LOOSE ENTRIES WILL NOT BE ACCEPTED.**

**QUESTIONNAIRE**

- 1) What is your annual budget?
  
  
- 2) What time of year do you make your major purchases?
  
  
- 3) Who is your photographic and digital supplier?

**PAYMENT INFORMATION**

**ONLY ONE CHECK, BANKCARD OR PURCHASE ORDER PER SCHOOL.**

☐ Check (payable to Kelly Atkinson)

☐ Purchase Order  
(payable to Kelly Atkinson)  
You must attach a hard copy of your PO to this entry form.

☐ Bank Card  
You must include:  
1. Card number  
2. **BILLING** address of the card (this is rarely the same as the school address, so confirm with your purchasing agent.)  
3. Expiration date of card  
4. CUV (3-digit # on back of card)

School \_\_\_\_\_

Address \_\_\_\_\_

City \_\_\_\_\_ Zip \_\_\_\_\_

Photography instructors name \_\_\_\_\_

phone# \_\_\_\_\_ Ext \_\_\_\_\_

e-mail address \_\_\_\_\_

CATEGORY	QUANTITY
1.Traditional Silver Gelatin b&w _____	
2.Abstract open _____	
3.Animal open _____	
4.Documentary open _____	
5.Still Life open _____	
6.Portrait open _____	
7.Architecture open _____	
8.Manipulation open _____	
9.Camera Phone _____	
10.Landscape open _____	
11.People open _____	
Grand total of entries ➡	

Number of students competing this year \_\_\_\_\_



☐ Please return my entries to the address listed on the enclosed shipping label. I have supplied: 1) a suitable shipping container; 2) a return address label; 3) sufficient postage.

☐ Please hold my entries at Kenmore Camera. They must be retrieved by July 31st. After that date, all remaining images will be discarded unless arrangements have been made with Executive Director Kelly Atkinson at [kellyatkinsonphotography@gmail.com](mailto:kellyatkinsonphotography@gmail.com)  
*Some of these entries may have been awarded a ribbon. If you can't retrieve them, ask a student or parent.*

**STORE ADDRESS:** Kenmore Camera 6708 NE 181st Street • Kenmore WA 98028  
For postal deliveries: PO Box 82467 Kenmore, WA 98028 / [www.kenmorecamera.com](http://www.kenmorecamera.com)

**All entries must be in our possession by 3 PM Saturday, April 28, 2018**  
**Questions? Contact Executive Director Kelly Atkinson at [kellyatkinsonphotography@gmail.com](mailto:kellyatkinsonphotography@gmail.com)**

1. CARD NUMBER: \_\_\_\_\_

2. **EXACT BILLING** ADDRESS OF CARD \_\_\_\_\_

3. EXPIRATION DATE OF CARD: \_\_\_\_\_

4. CUV (the 3-digit number located on the back of the card): \_\_\_\_\_

**Please write clearly!**





**2018 I.D. Tag**

securely tape in the  
UPPER LEFT HAND CORNER  
on the back of your mounted entry.

School: \_\_\_\_\_

(DO NOT USE INITIALS!)

Student: \_\_\_\_\_

Student e-mail (MANDATORY):  
\_\_\_\_\_

Student phone # (MANDATORY):  
\_\_\_\_\_

Category \_\_\_\_\_

***How was your image photographed?***

- ☐ traditional film camera    ☐ pinhole camera  
☐ digital camera    ☐ camera phone/mobile device

By entering this contest you agree to allow  
your photo to be shown for instructional purposes.



**2018 I.D. Tag**

securely tape in the  
UPPER LEFT HAND CORNER  
on the back of your mounted entry.

School: \_\_\_\_\_

(DO NOT USE INITIALS!)

Student: \_\_\_\_\_

Student e-mail (MANDATORY):  
\_\_\_\_\_

Student phone # (MANDATORY):  
\_\_\_\_\_

Category \_\_\_\_\_

***How was your image photographed?***

- ☐ traditional film camera    ☐ pinhole camera  
☐ digital camera    ☐ camera phone/mobile device

By entering this contest you agree to allow  
your photo to be shown for instructional purposes.



**2018 I.D. Tag**

securely tape in the  
UPPER LEFT HAND CORNER  
on the back of your mounted entry.

School: \_\_\_\_\_

(DO NOT USE INITIALS!)

Student: \_\_\_\_\_

Student e-mail (MANDATORY):  
\_\_\_\_\_

Student phone # (MANDATORY):  
\_\_\_\_\_

Category \_\_\_\_\_

***How was your image photographed?***

- ☐ traditional film camera    ☐ pinhole camera  
☐ digital camera    ☐ camera phone/mobile device

By entering this contest you agree to allow  
your photo to be shown for instructional purposes.



**2018 I.D. Tag**

securely tape in the  
UPPER LEFT HAND CORNER  
on the back of your mounted entry.

School: \_\_\_\_\_

(DO NOT USE INITIALS!)

Student: \_\_\_\_\_

Student e-mail (MANDATORY):  
\_\_\_\_\_

Student phone # (MANDATORY):  
\_\_\_\_\_

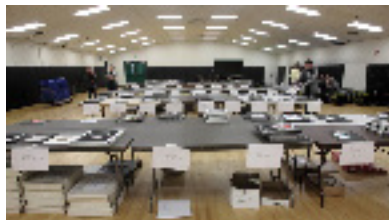
Category \_\_\_\_\_

***How was your image photographed?***

- ☐ traditional film camera    ☐ pinhole camera  
☐ digital camera    ☐ camera phone/mobile device

By entering this contest you agree to allow  
your photo to be shown for instructional purposes.





In 2014, our volunteer staff processed 4,100 entries from 70 high schools in a single day. That's a lot of work, buster!



Volunteers quickly set up a category for judges to view at the Inglemoor H.S. gym.



©Nick Chiado, Bainbridge H.S.

**DEADLINE FOR ENTRY  
APRIL 28, 2018**

### THE JUDGING OF ENTRIES

Judging will take place on Saturday, May 5th, 2018 beginning at 9 AM at Inglemoor High School gymnasium. The address is 15500 Simonds Road NE Kenmore WA 98028. This event is open to the public.

### THE JUDGES

Three judges will be chosen to jury this event. We select judges who have a great deal of experience working with and viewing photographs in their profession. The judges generously volunteer their time to view nearly four thousand images.

### THE JUDGING PROCESS

The judges will view one category at a time in the Preliminary Round, and select the photographs they wish to see in the Final Round. During the Final Round, the judges will vote to determine the order of the top six photographs in each category.

### JUDGING CRITERIA

The judges are asked to make their selections by choosing photographs that represent excellence in the following areas:

#### 1. ARTISTIC EXPRESSION

A successful photograph must tell a story or relay a mood. What emotion or attitude are you trying to convey with your photograph? Be sure your photograph provides the viewer with enough information to understand your point of view. Try to photograph your subject in a new and interesting way. Seek feedback from your peers. In addition to asking them if they like your photograph, find out how they feel when they view it. Artistic expression will heavily influence the way the judges evaluate your image.

#### 2. TECHNICAL ABILITY

A beautifully printed photograph can further enhance the artistic expression of the image. Produce a high quality image with rich blacks and brilliant whites or dazzling colors, a full tonal range, and absolutely no dust spots, fingerprints, scratches or dents to distract the viewer. A sound technical print shows the judges you have invested the extra time and effort. **Students are required to print all of their own images.** No commercially printed images are permitted.

#### 3. PRESENTATION

A clean and simple presentation allows the viewer to concentrate on the image. Often proper presentation is the subtle difference when judges are selecting the final images for the official exhibit. All entries must be mounted on mat board or other sturdy material not exceeding 16" x 20". **IMPORTANT NOTE: The students entering the image must perform the presentation. We have asked judges to place more emphasis on presentation when making their final selections.**



©Elliot Shultz, Stadium High School



©Jordan Baker, Bothell H.S.  
2011 Best in Show

**DEADLINE FOR ENTRY**  
**APRIL 28, 2018**

### TEAM SCORING

Students can accumulate points for their school by earning a 1st - 6th placement in a category. The school with the highest team score at the end of the competition wins the state title. Points are awarded as follows:

1st place - 6 points; 2nd place - 5 points; 3rd place - 4 points; 4th place - 3 points; 5th place - 2 points; 6th place - 1 point.

### SELECT AND FINALIST

Any photograph chosen by a judge to be viewed in the Final Round will be awarded a "SELECT" ribbon. Generally, this constitutes the top 10% of all entries.

The final 6 choices from each of the 3 judges in the Final Round will be awarded a "FINALIST" ribbon. Only 18 images from each category receive a "FINALIST" ribbon.

### BEST IN SHOW

The Best in Show will be selected by the judges from the 1st place photographs in each of the 11 categories. Best in Show is decided on and announced at our awards ceremony in June.

### FINAL EXHIBIT

The top 3 photographs from each of the 11 categories become the final exhibit. These final 33 images will be professionally matted and framed by Museum Quality Framing, and they may be reproduced in newspapers, web sites, magazines and marketing materials promoting the event. All images from the exhibit stay on tour for one year, and then are returned to their school. Final exhibits from 2009 - present may be viewed on-line at [www.kenmorecamera.com](http://www.kenmorecamera.com).

Contact Executive Director Kelly Atkinson at [kellyatkinsonphotography@gmail.com](mailto:kellyatkinsonphotography@gmail.com) for details.

### WHEN CAN I FIND OUT THE RESULTS?

Results will be tabulated and confirmed in the days following the judging. Final results will be posted on the Kenmore Camera website at [www.kenmorecamera.com](http://www.kenmorecamera.com) on Wednesday, May 9th, 2018. Your patience is appreciated.

You can see all photographs placing 1st - 6th, and, all of the FINALIST winners from 2017 at [www.wshspc.com](http://www.wshspc.com)

### QUESTIONS?

Contact Executive Director Kelly Atkinson at [kellyatkinsonphotography@gmail.com](mailto:kellyatkinsonphotography@gmail.com)

museum quality  
**FRAMING**

**Canon**

**KENMORE CAMERA**

PHOTOGRAPHIC  
CENTER  
NORTHWEST



©Ella Banken, Tacoma School of the Arts



©Ian Ostericher, Peninsula High School  
2009 Best in Show

**DEADLINE FOR ENTRY**  
**APRIL 28, 2018**

## **DIAMOND Sponsors**

### **MUSEUM QUALITY FRAMING**

You name it, they frame it. Photographs, prints, posters, fine art, 3D objects. The quality of MQF's custom framing and workmanship is **FULLY GUARANTEED FOR A LIFETIME**. MQF is the largest custom framing business in the Northwest and has been an industry leader since 1974. They have stores located in 7 beautiful Seattle neighborhoods. In addition to custom framing, MQF offers framed art, ready-made frames, art services and great advice. They can even print your photos and turn them into works of art on paper, canvas or metal. Check them out at [www.pnwframing.com](http://www.pnwframing.com). Museum Quality Framing has been a DIAMOND sponsor since 2006.

## **GOLD Sponsors**

### **KENMORE CAMERA, CANON**

Kenmore Camera offers one of the largest selections of digital SLR's in the Pacific Northwest. They also offer a wide selection of inks and papers, darkroom products, books, used equipment, tripods and camera bags. Kenmore Camera's has been a sponsor of this event since 2007. Visit Kenmore's new store at 6708 NE 181st Street Kenmore, WA 98028 • 1-888-485-7447 • [www.kenmorecamera.com](http://www.kenmorecamera.com)

## **SILVER Sponsors**

### **PHOTOGRAPHIC CENTER NORTHWEST**

We continue to build PCNW as the photographic heart of the Northwest, through a reputation for excellence that extends across the nation and the world. Our school serves students of all levels with a full range of coursework in black-and-white and color film and digital media, and a rigorous certificate program encompassing theory, aesthetics, and technical mastery. PCNW provides its students and the community with resources that include darkrooms, studios, a digital lab and library. Through exhibitions, lectures, scholarships, and outreach projects, PCNW provides educational opportunities to professional and amateur photographers and to the public at large. PCNW has been a sponsor since 2006.

1200 12th Avenue Seattle, WA 98122 • 206-720-7222 • [www.pcnw.org](http://www.pcnw.org)

## **BRONZE Sponsors**

### **Jones Soda**

Selects six photographs from our exhibit to be featured on 250,000 bottles of soda.

### **Seattle Sounders FC**

Selects one student from the exhibit to accompany Sounders FC staff photographer at a game and learn how to shoot sports photography.

### **Key Bank**

Provides our event with a free merchant bank account.

### **Seattle Art Museum**

Hosts our exhibit in December and January.

museum quality  
**FRAMING**

**Canon**

**KENMORE CAMERA**

PHOTOGRAPHIC  
CENTER  
NORTHWEST

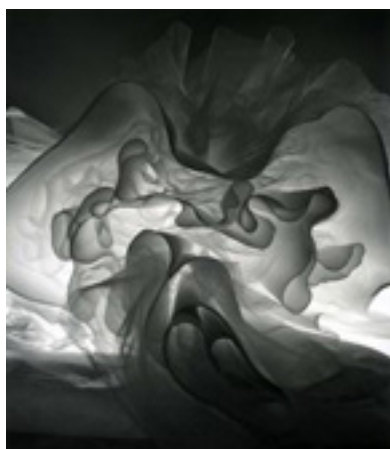




Museum Quality Framing hosts a huge crowd on opening night. Guests enjoyed refreshments compliments of Jones Soda.



Sponsors Cal Ellis of Canon and Bob Donovan of Kenmore Camera at opening night hosted by Museum Quality Framing in Seattle.



©Maranda Cavin, Olympia H.S.  
2012 Best in Show

### AWARDS CEREMONY JUNE 7th

Museum Quality Framing will be hosting the 2018 awards ceremony on Thursday, June 7th from 7 to 9 PM. At 8 PM, we'll announce the Best in Show and the six images selected by Jones Soda to be featured on their bottles, the Photographic Center Northwest Choice Award, and the Seattle Sounders FC winner. Bring your friends, parents, cousins, etc. See the 2018 exhibit of 33 images publicly displayed for the first time. Museum Quality Framing's address is 428 Westlake Avenue N. in Seattle, at the south end of Lake Union. Visit [www.pnwframing.com](http://www.pnwframing.com) for directions.

### BEST IN SHOW ANNOUNCEMENT

Be there for the dramatic announcement at 8 PM when the Best in Show selection is revealed for the first time. The six Jones Soda selections, the PCNW selection and the Seattle Sounders FC selection will also be announced.

### PRIZES (see page 12 for full details)

**BEST IN SHOW:** The student winning Best in Show will be awarded \$250.

- Students winning 1st place in the other 10 categories will receive \$100.
- Students selected for the final exhibit receive free matting and framing of their photograph compliments of Museum Quality Framing.
- One student will be awarded free tuition to a Photographic Center Northwest summer teen workshop of their choice (\$395 value).
- Six images from the exhibit will be selected by Jones Soda to be featured on 250,000 of their bottles. The choices will be revealed at 8 PM on opening night Thursday, June 7th at Museum Quality Framing.
- One student will be selected by Seattle Sounders FC soccer club photographer Corky Trewin to attend a Sounders FC match and learn to shoot like a pro.

### TOURING EXHIBIT

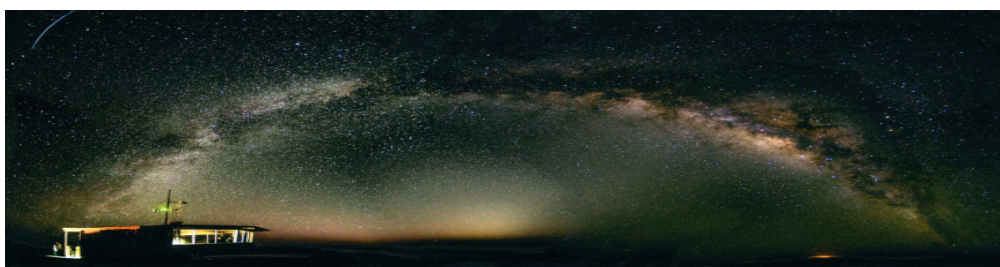
The exhibit of 33 images will tour the state for one year. Here is the schedule of exhibits for 2018:

June - **Museum Quality Framing**

December & January - **Seattle Art Museum**

January & February - **Kenmore Camera**

Visit [www.kenmorecamera.com](http://www.kenmorecamera.com) to see exhibits from 2009 - present on-line.



©Riley Jacques, Ferris H.S. / 2nd place LANDSCAPE





Jones Soda selects six images from our exhibit each year and features them on 250,000 bottles of their soda.



2012 winner Julia Hatten of Roosevelt High School on the pitch with Sounders FC photographer Corky Trewin.

*"Shooting the game was a great prize and I'm lucky to have had the opportunity!"*

Julia Hatten, Roosevelt H.S.

**DEADLINE FOR ENTRY**  
**APRIL 28, 2018**

### PROMOTING STUDENT IMAGES

The purpose of this event is to provide a prestigious public platform for student photographic art. We showcase the final exhibit of 33 student images at Museum Quality Framing, Seattle Art Museum, Kenmore Camera, and on the Kenmore Camera web site at [www.kenmorecamera.com](http://www.kenmorecamera.com).

Student images are also featured in our annual RULES & REGULATIONS publication, and our seasonal newsletters sent to over 425 high school photography instructors. For these reasons we need written permission to reproduce student images. Reproduced images will always include a copyright, the student's name, and the school they represent. If you have any questions please contact Executive Director Kelly Atkinson at [kellyatkinsonphotography@gmail.com](mailto:kellyatkinsonphotography@gmail.com)

### BEST IN SHOW

\$250

One image from each of the 11 first place images will be selected as Best in Show. The winner will be announced at 8 PM at our opening night event on Thursday, June 7th at Museum Quality Framing located at 428 Westlake Avenue North in Seattle.

*Compliments of Kenmore Camera and Canon*

### FIRST PLACE IN CATEGORY

\$100

The remaining 10 students with a 1st place image will be awarded a \$100 check.

*Compliments of Kenmore Camera and Canon*

### PCNW CHOICE AWARD

Free tuition to a Photographic Center Northwest summer teen workshop. PCNW is a terrific photographic resource right here in Seattle. Visit their website at [www.pcnw.org](http://www.pcnw.org) to see all of the traditional and digital photography classes and workshops offered.

*Compliments of Photographic Center Northwest [www.pcnw.org](http://www.pcnw.org)*

### JONES SODA LABEL PRIZE

Six images from the 2018 exhibit will be featured on 250,000 Jones Soda bottles that will be distributed regionally. The six Jones Soda selections will be revealed for the first time at our opening night ceremony at 8 PM on Thursday, June 7th, 2018 at Museum Quality Framing 428 Westlake Avenue North in Seattle.

*Compliments of Jones Soda Company [www.jonessoda.com](http://www.jonessoda.com)*

### SEATTLE SOUNDERS "Experience Photography!" AWARD

Awarded to one of the 33 student finalists in the 2018 exhibit by Seattle Sounders FC soccer team photographer Corky Trewin. The winner will receive a sideline photography credential to a 2018 Seattle Sounders FC soccer match to accompany Corky on the sidelines for the entire game, and two game tickets. The game will be confirmed once the schedule is announced in March 2018.

*Compliments of the Seattle Sounders FC*